

Project:

1 ALTERNATYVA - triukšmo žemėlapis

Printed/Page

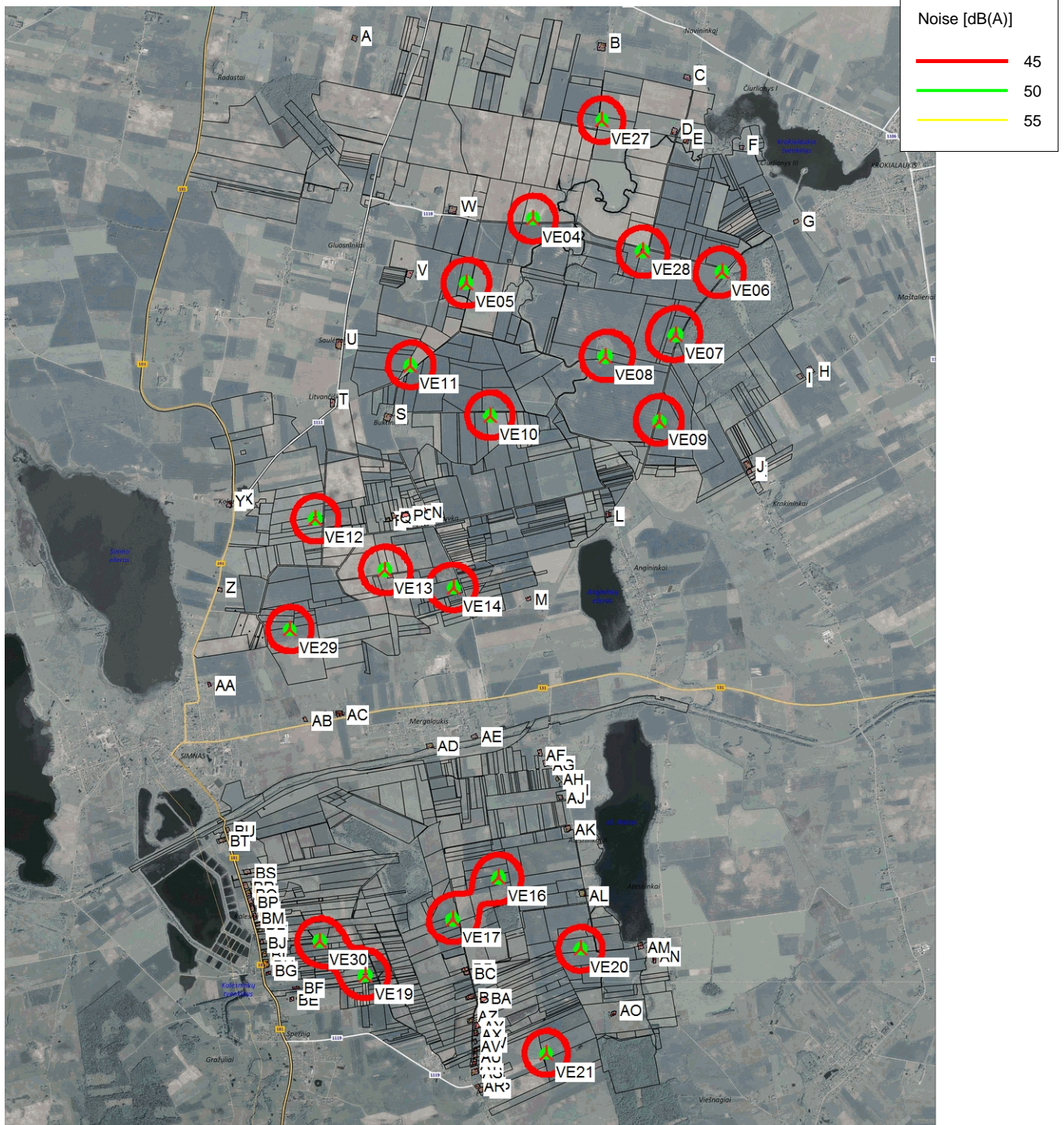
2021.05.19 10:17 / 1

Calculated:

2021.05.19 10:07/2.9.269

DECIBEL - Map 10,0 m/s

Calculation: DECIBEL - Alytus PAV ataskaita



Map: Alytus PAV, Print scale 1:60,000, Map center Lithuanian TM LKS94-LKS94 (LT) East: 480.536 North: 6.029.026

New WTG

Noise sensitive area

Noise calculation model: ISO 9613-2 General. Wind speed: 10,0 m/s

Height above sea level from active line object

Project:

2 ALTERNATYVA - triukšmo rezultatų žemėlapis

Printed/Page

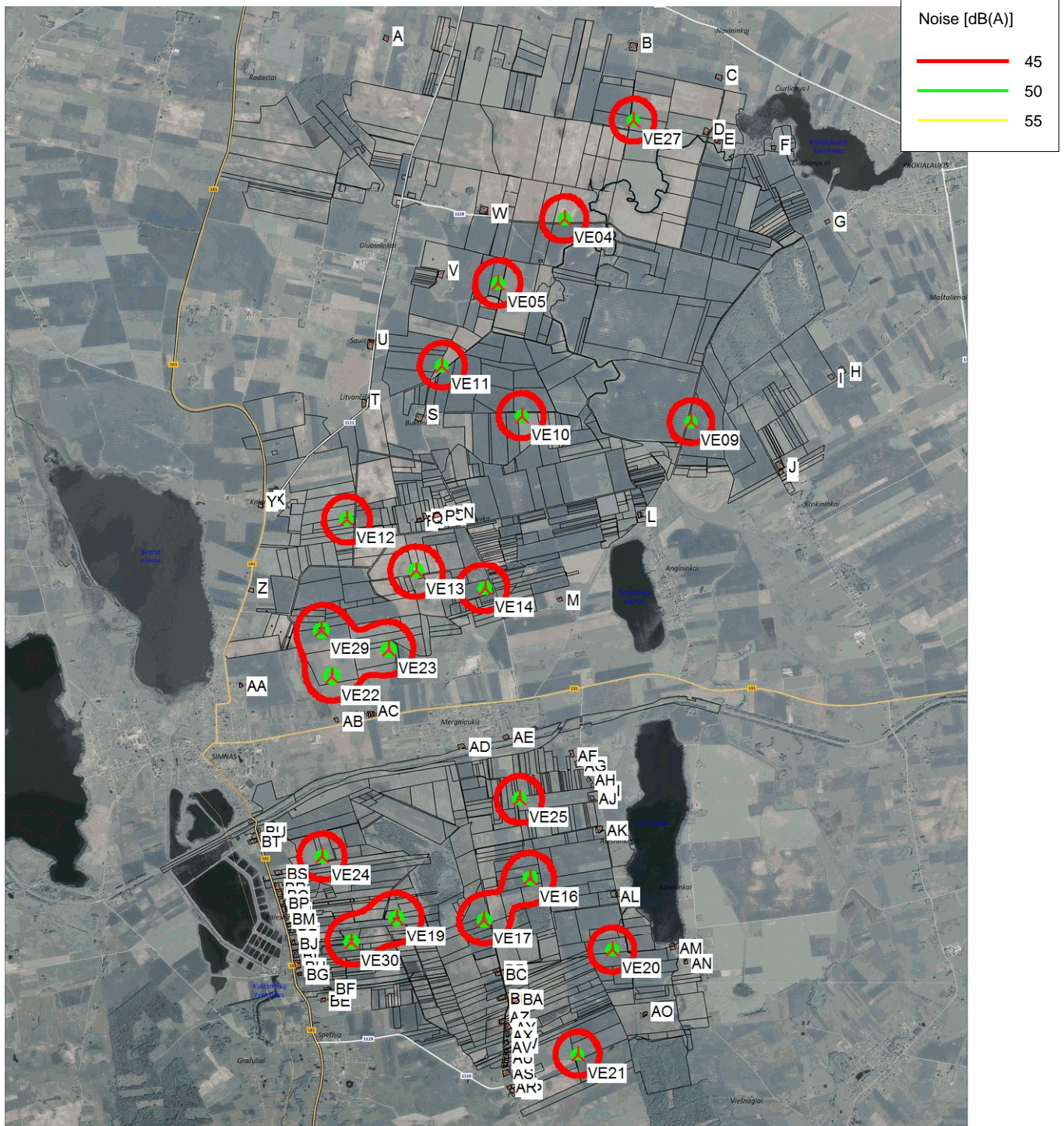
2021.07.25 23:50 / 1

Calculated:

2021.07.25 23:48/2.9.269

DECIBEL - Map 10,0 m/s

Calculation: DECIBEL - Alytus PAV ataskaita



Map: Alytus PAV, Print scale 1:60.000, Map center Lithuanian TM LKS94-LKS94 (LT) East: 480.217 North: 6.029.026
 New WTG Noise sensitive area
 Noise calculation model: ISO 9613-2 General. Wind speed: 10,0 m/s
 Height above sea level from active line object

DECIBEL - Main Result

Calculation: DECIBEL - Alytus PAV ataskaita

...continued from previous page

Table with columns: Noise sensitive area No., Name, Lithuanian TM LKS94-LKS94 (LT) East, North, Z, Emission height, Demands Noise, Distance, Sound Level From WTGs, Distance to noise demand, Demands fulfilled? Noise, Distance, All.

Distances (m)

Table with columns: WTG, NSA, VE02, VE03, VE04, VE05, VE06, VE07, VE08, VE10, VE11, VE12, VE13, VE14, VE15, VE19, VE21, VE24, VE25, VE26, VE27, VE30.

To be continued on next page...

Project:

3 ALTERNATYVA - triukšmo rezultatai

Printed/Page

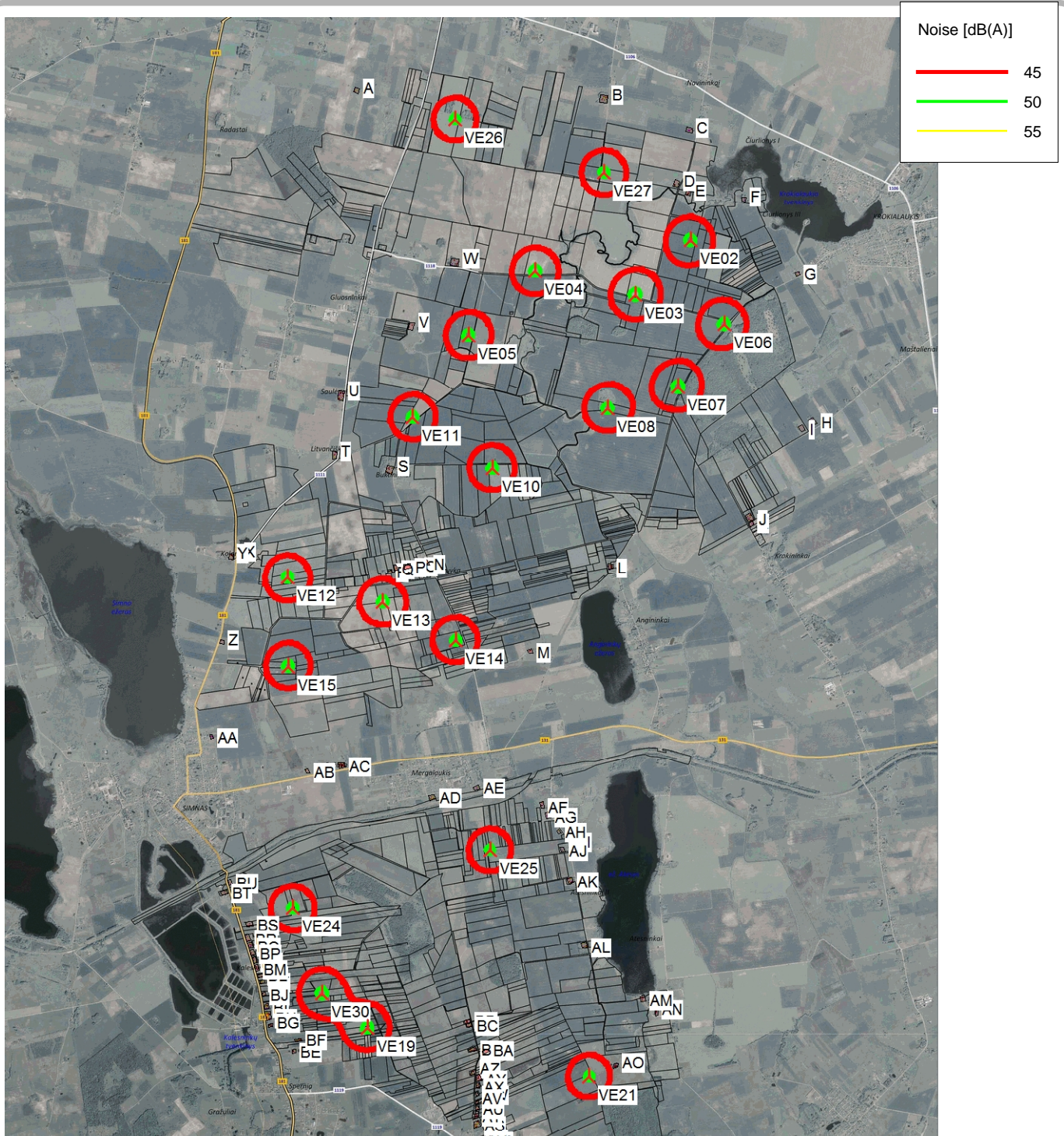
2021.07.26 00:11 / 1

Calculated:

2021.07.26 00:07/2.9.269

DECIBEL - Map 10,0 m/s

Calculation: DECIBEL - Alytus PAV ataskaita



Map: Alytus PAV , Print scale 1:60.000, Map center Lithuanian TM LKS94-LKS94 (LT) East: 480.513 North: 6.029.447

New WTG

Noise sensitive area

Noise calculation model: ISO 9613-2 General. Wind speed: 10,0 m/s
Height above sea level from active line object